

Setting Up a Wireless Network Client with Windows Vista and Windows 7 (fsustudent wireless network)

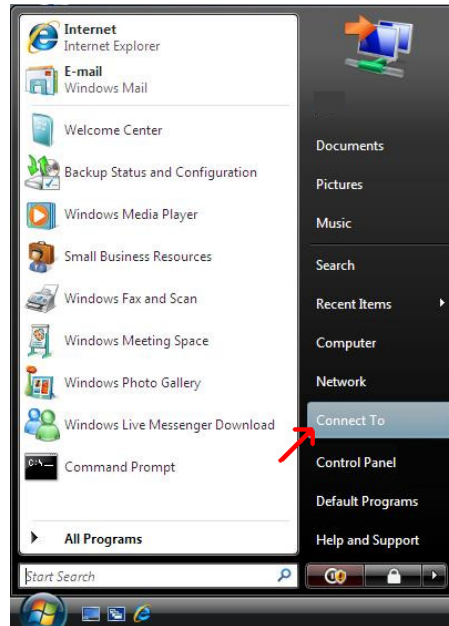
To function with FSU's wireless networks, it is recommended that users purchase a wireless network card that supports 802.11 a/b/g or 802.11a/g.

FSU requires all network users to install and update an anti-virus program. A virus or spy-ware on a network will cause severe performance issues. You should also install the latest Windows Updates from Microsoft. For virus and software update information visit:

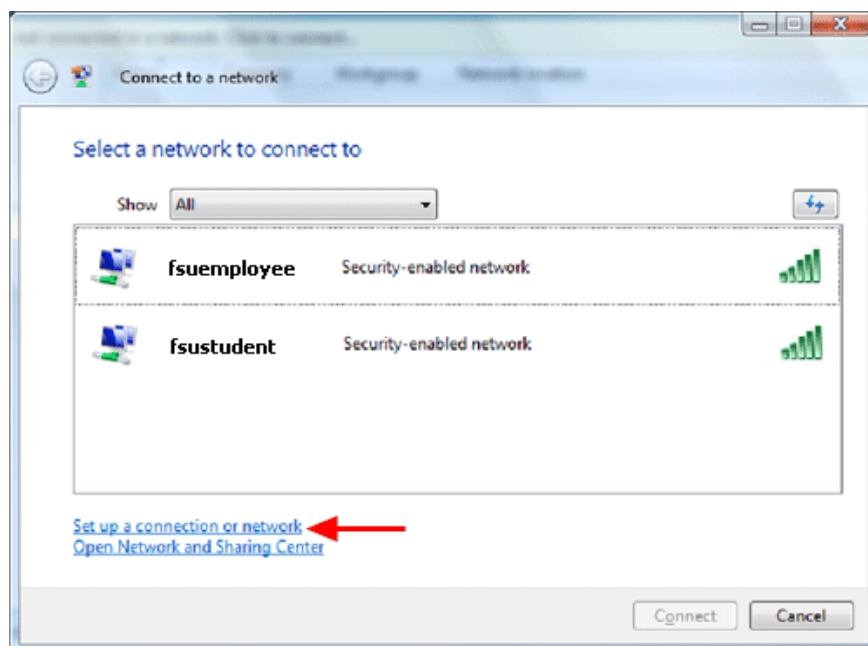
<http://www.frostburg.edu/computing/cmpages>

Windows Vista and Windows 7: Install the network card and install the drivers. Neither Windows Vista nor Windows 7 require the Wireless Utility that comes with your network card. However, if the utility has already been installed, the following instructions can still be used to configure your system.

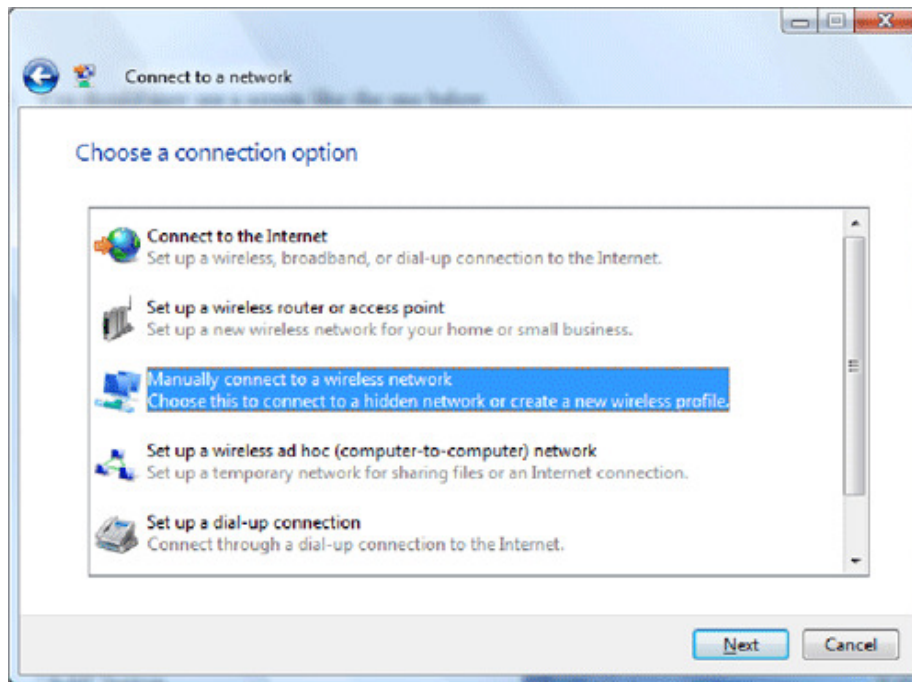
Click on **Start** then choose **Connect To** from the Windows Vista or Windows 7 Desktop.



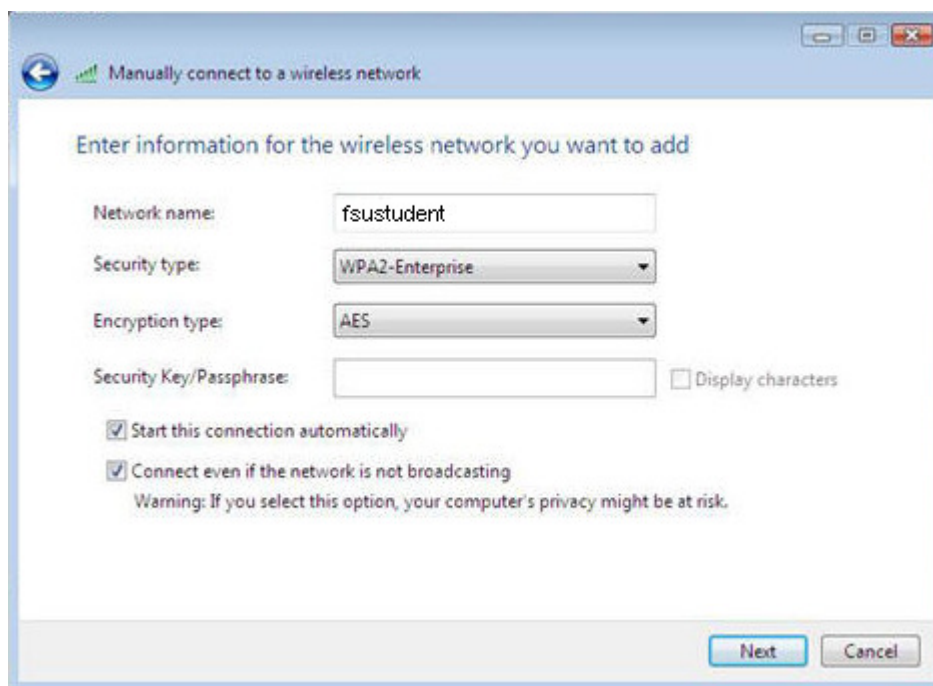
You will then see a screen similar to the one below:



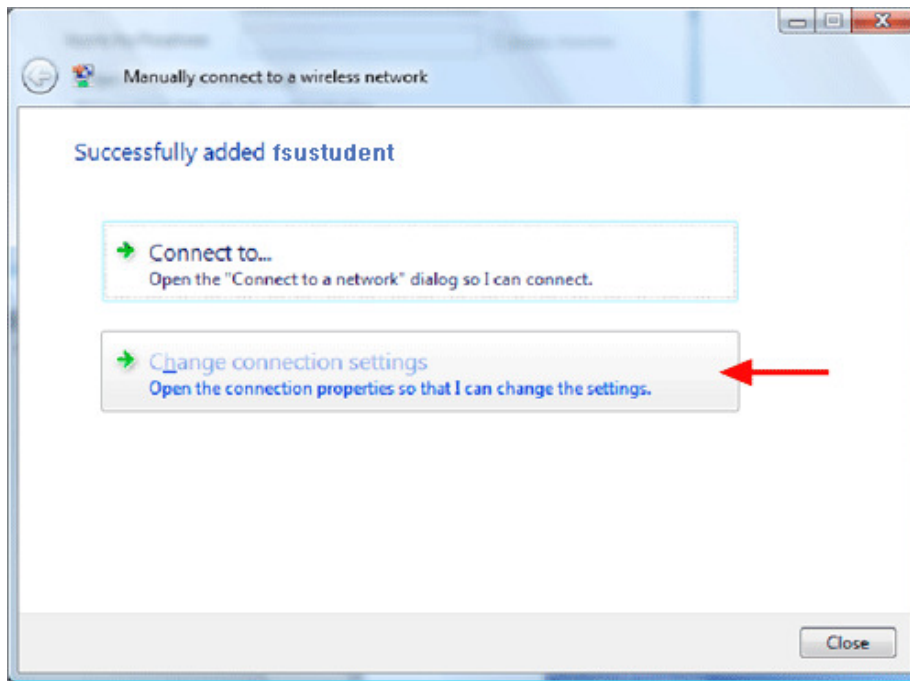
Click on *Set up a connection or network*, then click on *Manually connect to a wireless network*



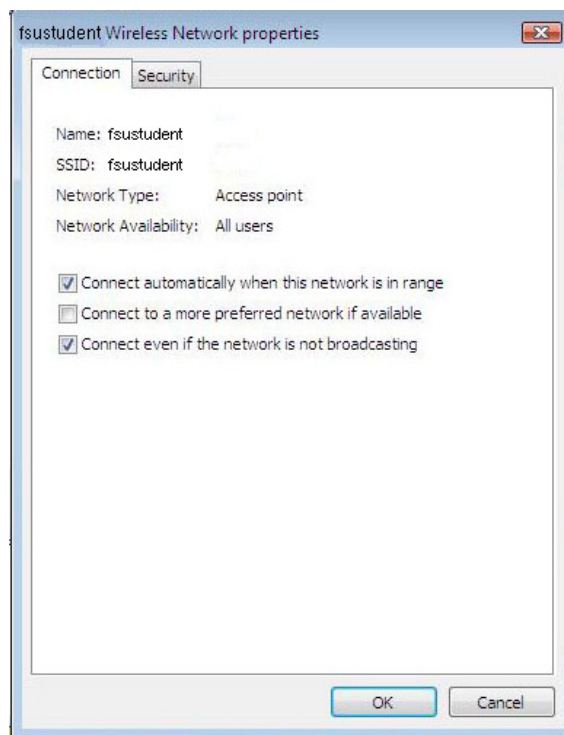
Type **fsustudent** (lower case) in the Network name field. Choose **WPA2-Enterprise** as the Security type. Choose **AES** (or **TKIP** if your wireless card doesn't support AES) as the Encryption type. Then click *Next* to continue.



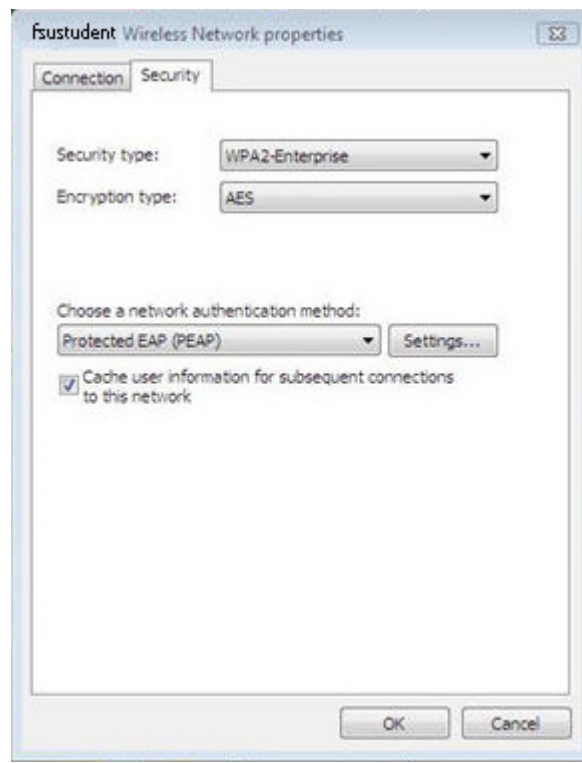
You will see a message that you have successfully added **fsustudent**. On this screen, click *Change connection settings*



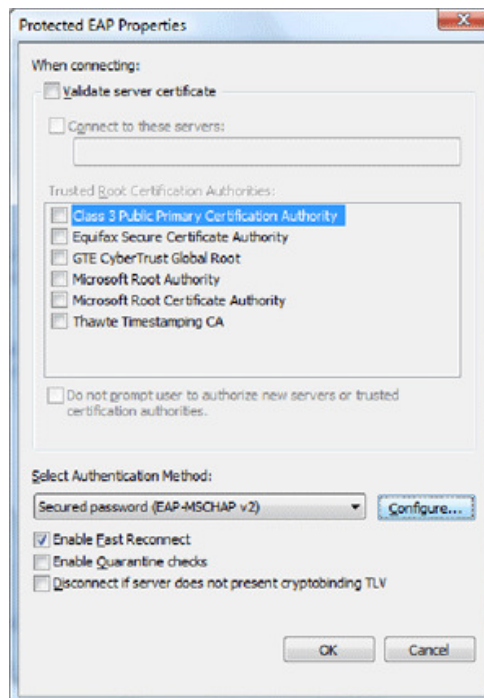
Uncheck the box next to *Connect to a more preferred network is available* then click on the *Security* tab.



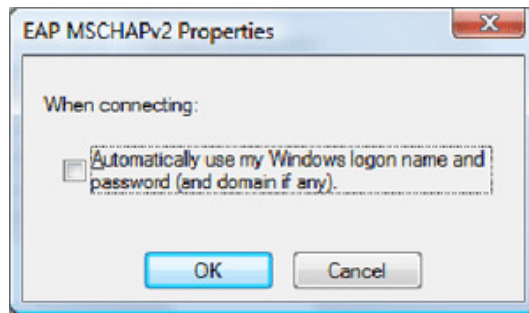
Choose *Protected EAP (PEAP)* as the authentication method. If more than one person will be using the computer you are configuring, uncheck the box next to *Cache user information for subsequent connections to this network*. Next, click the *Settings* button



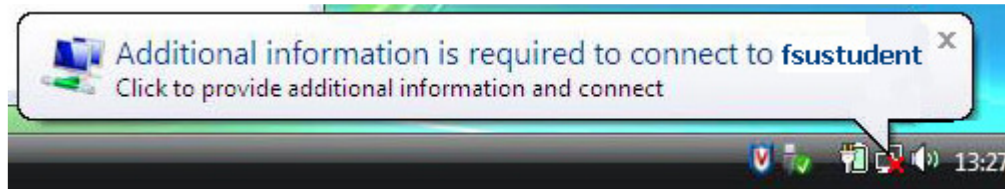
On the following screen, remove the check mark in the box next to *Validate server certificate*, check the box next to *Enable Fast Reconnect*, and in the Select Authentication Method box, select *Secure password (EAP-MSCHAP v2)*. Then click the *Configure* button.



It is very **IMPORTANT** that you **UN**check the box next to the *Automatically use my Windows logon name and password*. If you fail to remove this check you will not be able to connect to the wireless.



Click the **OK** button until you have closed all dialog boxes. To finish connecting to the **fsustudent** wireless network, you will need to enter your FSU credentials. You will see a connection bubble appear near your System Tray. Click on this bubble and enter your username (ex: jdoe) and password to connect. Enter FROSTBURG or frostburg.edu as the Logon domain.



Please visit <http://www.frostburg.edu/computing/cmpages> to register your wireless computer on the network. The registration process will ensure that your system is clean of viruses and spy-ware. If you have already registered the computer via the wired port, you may not need to re-register.